

# Influenza Update



April 9, 2018  
Matthew Rollosso, MPH&TM, RN  
(253) 798-6052 • [mrollosso@tpchd.org](mailto:mrollosso@tpchd.org)

Communicable Disease Division  
3629 South D Street, Tacoma, WA 98418  
(253) 798-6410 (p) • (253) 798-7666 (f)

## Pierce County

Since Oct. 1, we received notification of 527 influenza-related hospitalizations. The median age of hospitalized patients is 67 years and ages ranged from 2 weeks to 100 years. We received notification of 27 influenza-related deaths. The median age of people who died is 81 years and ages ranged from 44 to 102 years.

Emergency department (ED) and urgent care visits for influenza-like illnesses (ILI) continued to decrease during the week ending March 31.

We received notification of 32 influenza outbreaks in long-term care facilities.

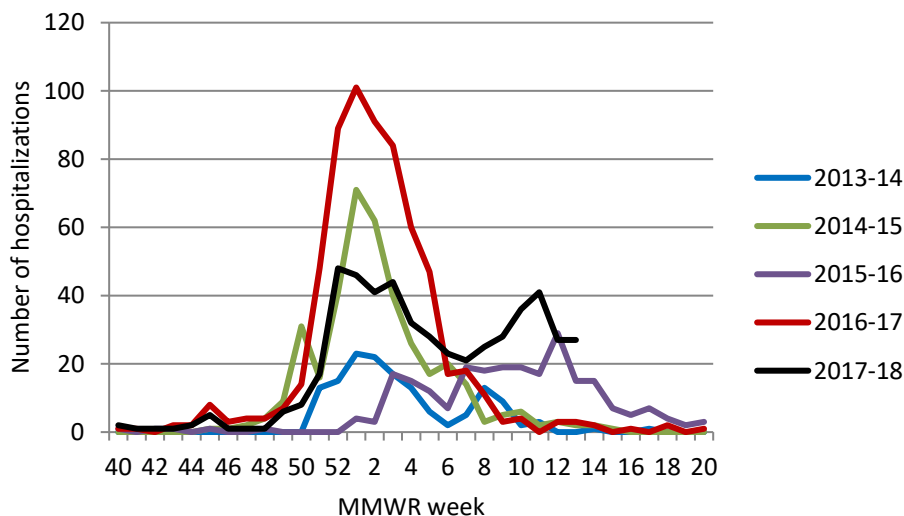
For the week ending March 31, we received notification of 304 positive influenza tests (26% of total tests). Sixty-four percent were positive for influenza B.

These data are preliminary and subject to change.

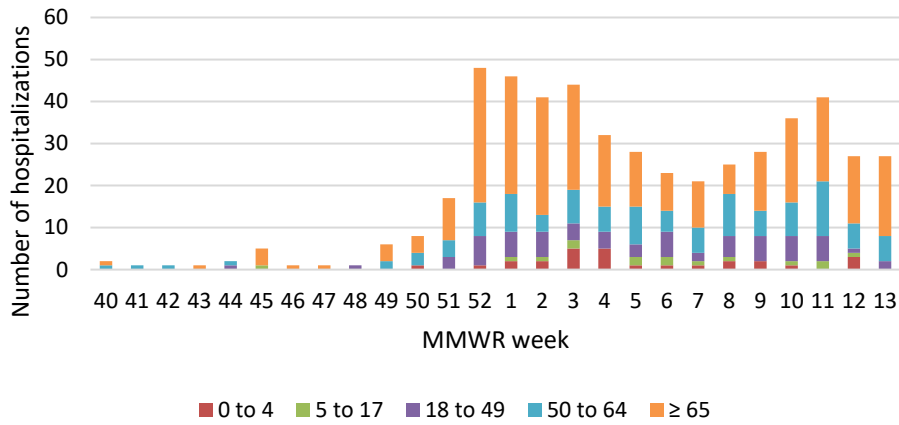
For information on influenza activity in the rest of Washington and the United States see:

- Centers for Disease Control and Prevention. Weekly U.S. influenza surveillance report—[www.cdc.gov/flu/weekly/index.htm](http://www.cdc.gov/flu/weekly/index.htm).
- Washington State Department of Health. Washington influenza update—[www.doh.wa.gov/Portals/1/Documents/5100/420-100-FluUpdate.pdf](http://www.doh.wa.gov/Portals/1/Documents/5100/420-100-FluUpdate.pdf).

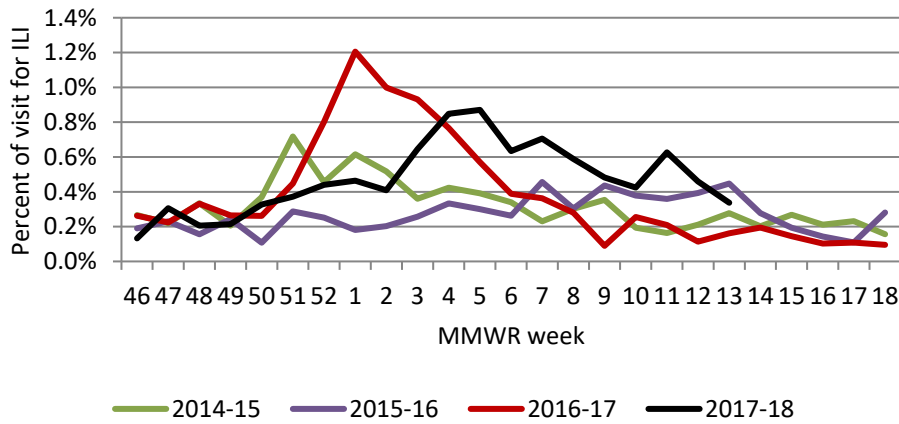
**Pierce County influenza hospitalizations**



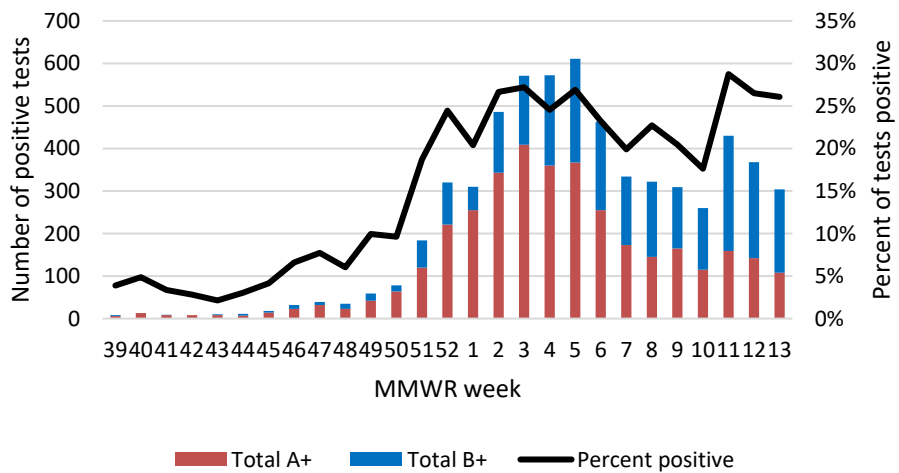
### Pierce County influenza hospitalizations by age group



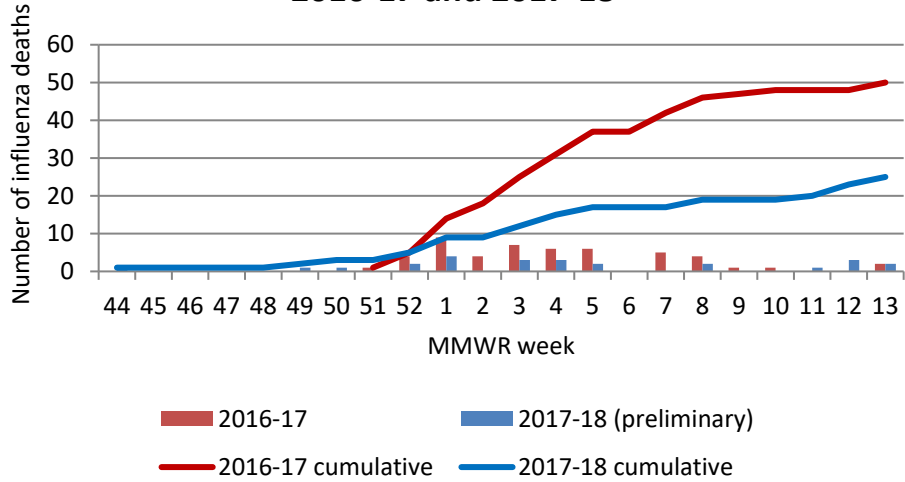
### ED and urgent care visits for ILI Pierce County



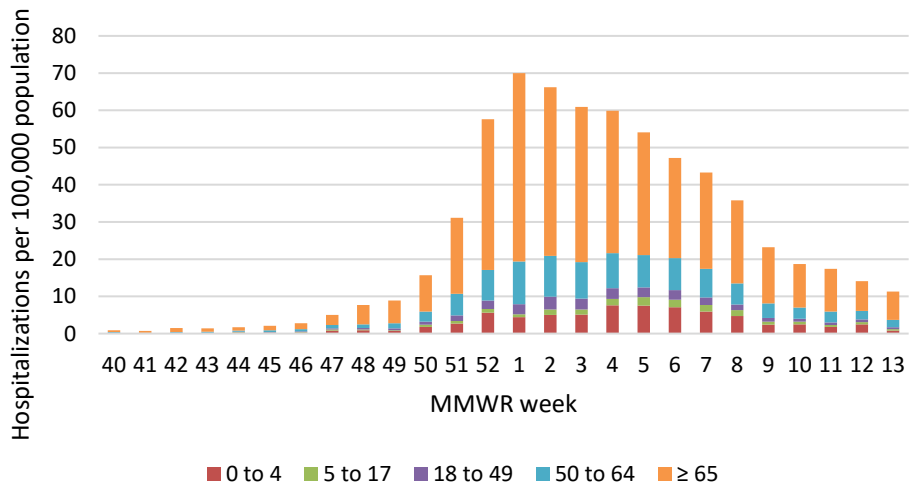
### Pierce County influenza tests



### Pierce County influenza deaths 2016-17 and 2017-18



### Influenza hospitalizations, U.S. by age group



### Influenza tests, U.S. reporting clinical labs

