

Influenza Update



Feb. 5, 2018
Matthew Rollosso, MPH&TM, RN
(253) 798-6052 | mrollosso@tpchd.org

Communicable Disease Control Division
3629 South D Street, Tacoma, WA 98418
(253) 798-6410 (p) | (253) 798-7666 (f)

Pierce County

Since the week ending Jan. 1, influenza-associated hospitalizations in Pierce County are trending downward. Since Oct. 1, we received notification of 278 influenza-related hospitalizations. The median age of hospitalized patients is 68 years old and ages ranged from 2 weeks to 100 years old. So far in the 2017-2018 season, we received notification of 11 influenza-associated deaths. The median age of people who died is 69 years old and ages ranged from 44 to 102 years old. In the last two weeks, we have not received reports of any new deaths.

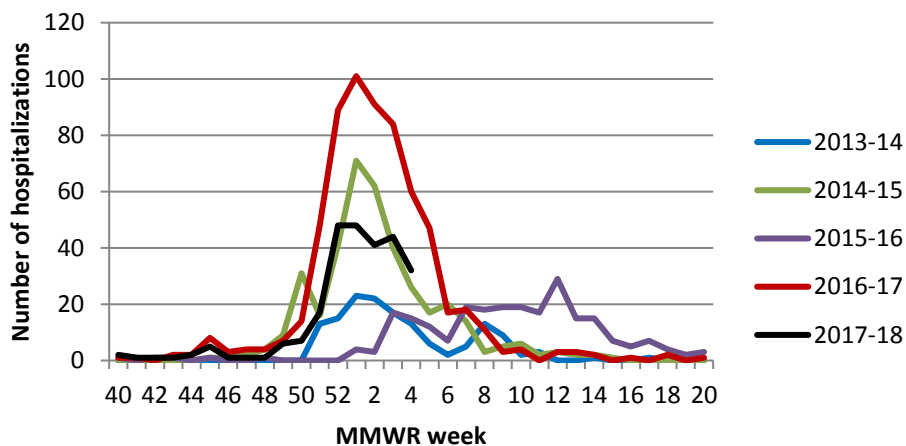
Emergency department (ED) and urgent care visits for influenza-like illnesses (ILI) are trending upward. Between Oct. 1 and Jan. 27, 451 people visited reporting EDs and urgent care clinics for ILI. Of those, 115 (28%) were 5 to 24 years old and 130 (31%) were 25 to 49 years old.

We received notification of 14 influenza outbreaks in long-term care facilities.

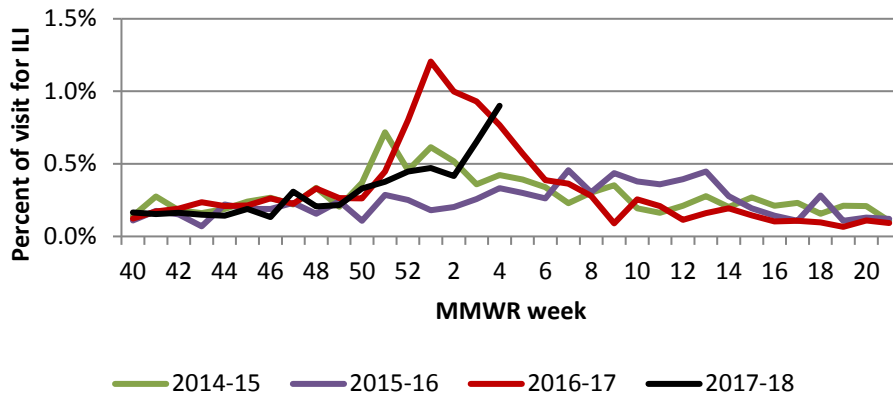
For the week ending Jan. 27, we received notification of 433 positive influenza tests (23% of total tests).

These data are preliminary and subject to change.

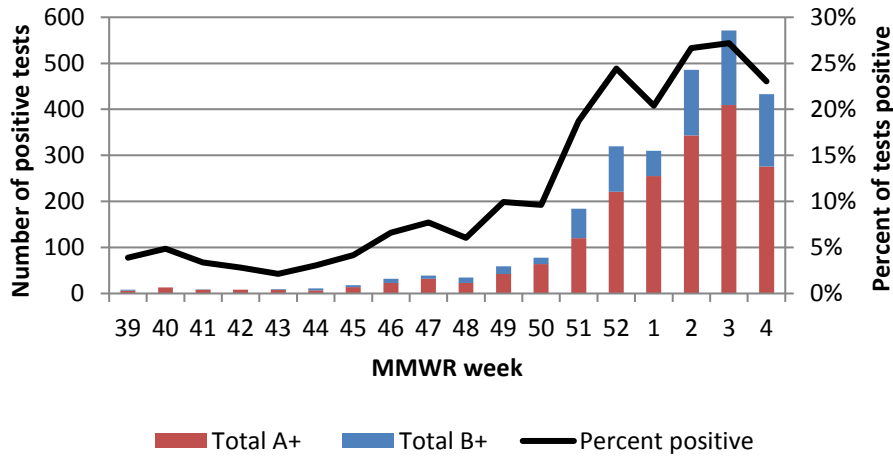
Pierce County influenza hospitalizations



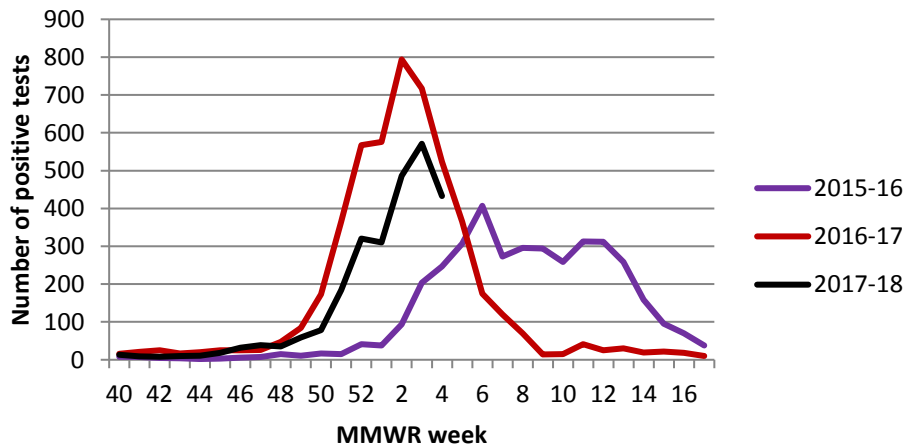
ED and urgent care visits for ILI, Pierce County



Pierce County influenza tests



Pierce County positive influenza tests

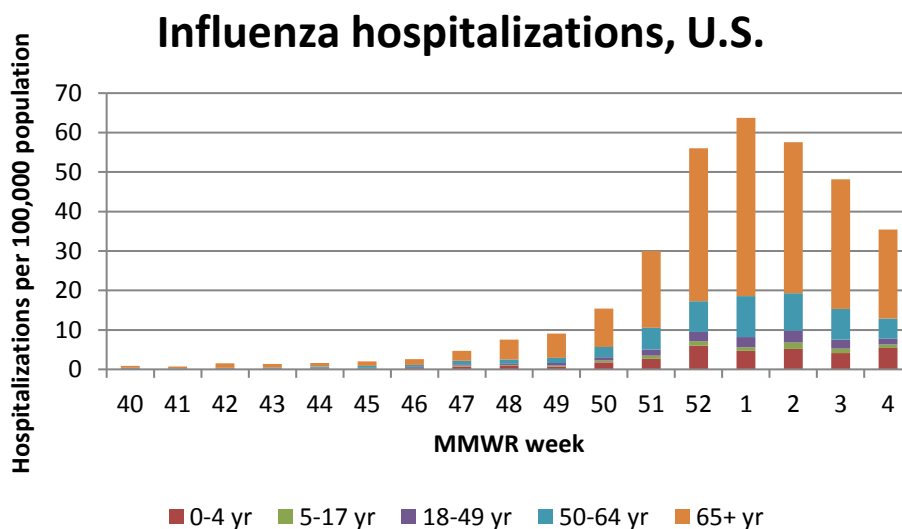


Washington

Washington influenza activity remains elevated. For the week ending Jan. 27, ILI accounted for 2.7% of outpatient visits to ILI Surveillance Network participants, above the state baseline of 1.1%. So far in the 2018-2018 season, the state received notification of 132 influenza-associated deaths and 113 outbreaks of ILI in long-term care facilities. For the week ending Jan. 27, 19.7% of state specimens tested by WHO/NREVSS were positive for influenza. The Centers for Disease Control and Prevention (CDC) characterized ILI activity in Washington as low and influenza activity as widespread.

National

United States influenza activity increased the week ending Jan. 27. Influenza A H3N2 is the most commonly identified virus. For the week ending Jan. 27, the proportion of outpatient visits to ILI Surveillance Network participants was 7.1%, above the national baseline of 2.2%. Reports of 53 pediatric deaths have come in for the 2017-2018 influenza season. For the week ending Jan. 13, the proportion of deaths attributable to pneumonia and influenza was 9.7%, above the epidemic threshold.



Centers for Disease Control and Prevention. (Feb. 2, 2018). Weekly U.S. influenza surveillance report—www.cdc.gov/flu/weekly/index.htm.

Washington State Department of Health. (Feb. 2, 2018). Washington influenza update—www.doh.wa.gov/Portals/1/Documents/5100/420-100-FluUpdate.pdf.