



Permit-Exempt Wells Require Hydrogeologic Study

New Pierce County Well Requirement

Effective Nov. 1, 2016, Pierce County Planning and Land Service (PALS) established a new county-wide policy that affects those who want to use wells. Building permit and subdivision applications that propose using permit-exempt wells as a potable water source must meet PALS policy. Applications must:

- Determine whether sufficient water is available to support the building or subdivision proposal based on the findings of a required Hydrogeologic study.
- Hire a licensed Washington State Hydrogeologist to complete the study. The study must demonstrate that the new well will not impact or impair senior water rights or established in-stream flows.

Questions? Contact PALS staff. Cory Ragan, (253) 798-2590 or Michael Jimenez, (253) 798-7181. Read more details on [Pierce County's site](#) on our [guidance document](#).

Code Enforcement Now Responds to Sewage Complaints Only

As of Jan. 1, 2017, the Health Department no longer responds to illegal dumping complaints. Pierce County Code Enforcement is now the single point of contact for these complaints. Our code enforcement team is now part of the On-Site Program and will continue to respond to complaints related to sewage issues.

We need your help! When you report surfacing sewage immediately (required within 24 hours), we can respond and resolve issues quickly. Call (253) 798-6440 or email EHCodeEnforcement@tpchd.org.

WHAT'S INSIDE

- 2 Submit Critical Areas Approval Online
- 2 Record Drawings Require Permanent Power
- 3 OSS Compliance Corner
- 3 On-Site Stakeholder Groups
- 4 90 Day Conditional RSS
- 4 EMMRs



Submit Critical Area Review Electronically

Are you a designer or engineer and need appropriate critical areas approval stamps from Pierce County Planning and Land Services (PALS)? Now, you can submit your request via email.

PALS employees check their email daily. If you don't get a response within 48 hours, call to ensure they received your request. Reach Scott Sissons, (253) 798-2758 or Debra Mershon, (253) 798-3150. If the PALS contacts are out of the office, their voicemail will direct you to an alternate contact.

When should you send your septic design to PALS? When a parcel

indicates a YES or has a description for possible site constraint under "About My Property." Scan and email a copy of your proposed septic design with your stamp.

Send Wetlands or Fish and Wildlife Habitat designs to Scott Sissons at ssisson@co.pierce.wa.us. Send Erosion Hazard, Flood, Floodway Possible, Landslide, Mine Hazard and Right-Of-Way Needs Area designs to Debra Mershon at dmersho@co.pierce.wa.us.

PALS can't always stamp the septic design, without having the applicant first apply for and receive the necessary Pierce County approvals.

On-Site Program Statistics		
Type	2015	2016
Building Site Applications	605	597
Remodel	404	450
Repair	255	291
Report of System Status	4,735	5,408
RME Inspection Reports	12,006	13,628
RME Pumping Reports	8,408	8,689
EMMR	1,219	1,312

Septic Systems Require Permanent Power Source

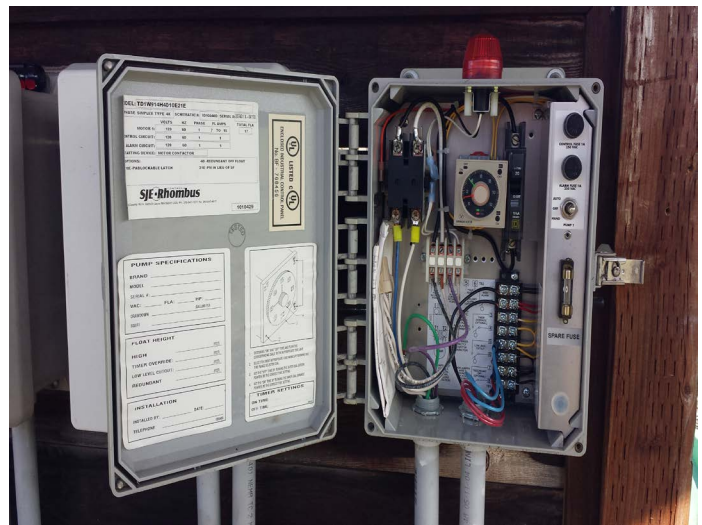
On June 21, 2016 we instituted a process for septic system record drawings that require electricity and control panels. We don't consider systems complete until they are connected to permanent power and tested. We also require drawing records to include the actual pump run time and dose count after testing with permanent power. To ease your approval process, wait to submit record drawings until they meet these conditions.

We've heard systems are being tested with temporary power, and in some cases the control panels aren't installed or missing. This results in homeowners experiencing problems with their new systems because they aren't properly set up and connected to power.

On-Site staff will begin random field inspections of submitted record drawings. If the system isn't connected to permanent power or control panels aren't installed, we may hold record drawings in the future to verify proper installation or set up.

We realize record drawing acceptance and holds on final building inspection and occupancy can be time sensitive. Let us know if you have ideas on how to make this process more efficient. We want to work with you to ensure septic systems are fully operational when the structure is occupied.

Questions? Contact Leigh McIntire at lmcintire@tphcd.org.



Control Panel with Power

OSS Certified Professional 101 - Know the Regulations

Do you know the regulations? As our 2017 certification window closes, (annual deadline is Feb. 15 to avoid late fees) all On-site professionals should review and understand the scope of practice and regulations associated with your certification.

Become familiar with On-site regulations in all Washington counties you work in and apply

those regulations. Knowing the regulations can save you time, money and headaches down the road.

Did you know the following are violations?

Failure to:

- Submit required documentation within required time limits.
- Perform work or respond to

clients, other professionals or the Health Department within a reasonable time.

- Properly represent any material fact, like qualifications of an O&M technician, specialist or OSS installer.

Ask before you act! Our On-site staff are here to help. Contact us with questions about Chapter 2 regulations.

On-Site Professional Stakeholder Groups

We've enhanced our communication and engagement efforts with our certified professionals and licensed septic designers and engineers. To better solicit feedback on policies, regulations and best practices, we now have three professional stakeholder groups:

Industry Support Group (ISG): For all septic professionals operating in Pierce County. We invite all On-site sewage industry to participate. This meeting includes reports from the other two professional groups, TAG and IAG.

Technical Advisory Group (TAG): Includes septic designers and professional engineers, as well as certified installers. This group addresses issues like fee changes, waivers/variances, new and revised policy development and overall coordination efforts.

Industry Advisory Group (IAG): Includes Operation and Maintenance (O&M) professionals and focuses on resolving O&M issues, coordination and planning with our Certified O&M professionals.

Interested in participating?

Our 2017 meeting schedule is below. Contact George Waun, (253) 798-6485 or gwaun@tpchd.org for more information.

Industry Support Group	Technical Advisory Group	Industry Advisory Group
April 13, 2-4 p.m.	March 15, 2-4 p.m.	February 22, 1-3 p.m.
August 17, 2-4 p.m.	June 14, 2-4 p.m.	March 29, 1-3 p.m.
	September 14, 2-4 p.m.	May 31, 1-3 p.m.
	December 13, 2-4 p.m.	July 26, 1-3 p.m.
		October 25, 1-3 p.m.

Certified Septic Professionals Workshop

Join us for our annual operations and maintenance workshops. Stay up to date on current industry regulations, practices and news.

CEU credits available.

- Saturday, March 25, 9 a.m.- 1 p.m. or
- Thursday, March 30, 8 a.m. - Noon.

Tacoma-Pierce County Health Department Auditorium
3629 South D Street
Tacoma, WA 98418

Register [online](#).

Questions?
Email Jamie Zorich at jzorich@tpchd.org.

90-Day Conditional RSS

Do you know septic systems that need repairs but their property owners can't complete them before their sale closes? You can help! Direct your customers to apply for a 90 Day Conditional RSS.

We can issue a Conditional RSS once the buyer accepts sole responsibility to complete the repairs within 90-days of ownership.

Once we receive the RSS and both the septic professional and our inspections are complete, we will determine a plan to resolve the septic system deficiencies. The parties involved with the property sale need to provide the following:

1. Review fee (currently \$330).
2. An estimate of costs to resolve the septic problems.
3. A signed agreement acknowledging the buyers are responsible for repairs.

Once we review the cost estimate and agreement, we can issue the Conditional RSS. The RSS report lists the deficiencies that the buyer is responsible to resolve within 90 days. Read more and see an example agreement at www.tpchd.org/rss.

On-Site Sewage, Well Permitting and Code Enforcement Staff

	On-Site General Information	(253) 798-6470	EHsepticssystemstpchd.org
Alisha Roston	Operation & Maintenance	(253) 798-4727	aroston@tpchd.org
Anne Harrington	RSS Processing	(253) 798-7678	aharrington@tpchd.org
Chet Morris	Code Field Specialist	(253) 798-2882	cmorris@tpchd.org
Emma McDaniel	Operation & Maintenance	(253) 798-2937	emcdaniel@tpchd.org
Erica Welborn	Code Field Specialist	(253) 798-3493	ewelborn@tpchd.org
Gary Porter	Program Manager	(253) 798-6569	gporter@tpchd.org
George Waun	OSS Field Lead III	(253) 798-6485	gwaun@tpchd.org
Greg Alton	OSS Field Specialist	(253) 798-4821	galton@tpchd.org
Jackie Parker	Application Processing	(253) 798-3529	jparker@tpchd.org
Jamie Zorich	Education/Outreach/Marketing	(253) 405-6815	jzorich@tpchd.org
Kristen Farley	OSS Field Specialist	(253) 798-6023	kfarley@tpchd.org
Laurel Parshall	Asbuilt Lookup/Permits/Finals	(253) 798-2888	lparshall@tpchd.org
Leigh McIntire	OSS Field Specialist Lead II	(253) 798-6144	lmcintire@tpchd.org
Maggie Morehouse	OSS Field Specialist	(253) 798-3819	mmorehouse@tpchd.org
Malcolm Wylie	OSS Field Specialist	(253) 798-6058	mwylie@tpchd.org
Maureen Walker	PALS Representative	(253) 798-3740	mwalker@tpchd.org
Monica Roppo	OSS Field Specialist	(253) 798-4751	mroppo@tpchd.org
Peggy McMurtrie	RSS Compliance	(253) 798-6142	pmcmurtrie@tpchd.org
Randall Olsen	Code Specialist Lead III	(253) 255-7017	rlolsen@tpchd.org
Renée Avelino	OSS Compliance	(253) 798-2831	ravelino@tpchd.org
Rich Dickerson	Well Permitting Specialist Lead II	(253) 798-2885	rdickerson@tpchd.org
Robert (Bob) Suggs	OSS Field Specialist	(253) 798-2868	rsuggs@tpchd.org
Sara Bird	Professional Certification	(253) 798-7692	sbird@tpchd.org
Tracy Jones	OSS Technician	(253) 798-4435	tjones@tpchd.org

Reminder to Report All EMMRs

You are required to notify us of any EMMRs you plan to conduct.

Repairs that are often not reported include:

- Adding or replacing inspection ports in a treatment or disposal component.
- Adding cover material to contain or stop surfacing effluent.
- Cleaning or replacing non-perforated pipe, D-box or stepdown.
- Changing distribution controls to alter the dose volume or daily output of a pump.

Call (253) 798-3811 or submit your notification on our [website](#).

Once the EMMR is complete report all services performed, current status of OSS and any deficiencies in Online RME within 10 days of finishing the work.



Tacoma-Pierce County
Health Department
Healthy People in Healthy Communities

www.tpchd.org